



## Innovative solution in the field of UV radiation detection

### Features

- Precise location of discharge sources
- Recording and playback of videos and images
- High UV sensitivity
- Automatic sharpness for UV and visible image
- Automatic noise reduction
- 5.7" touch LCD
- No sensitivity to sunlight during operation in full daylight
- Additional LED alarm in the event of UV radiation detection
- Built-in GPS
- Software for data transmission and generating reports

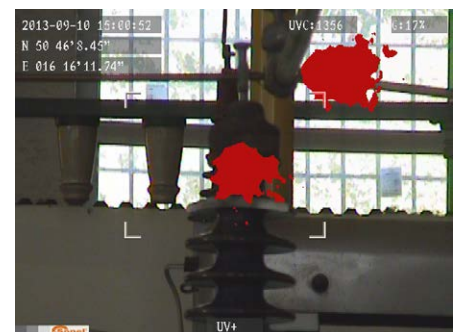
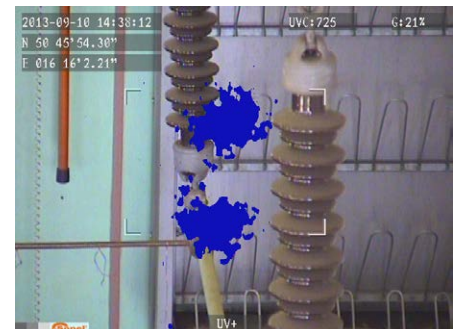
### Application

The design, placing emphasis on high functionality, allows for detection and monitoring of corona, arc and surface discharges in power engineering. This is a way to continuously analyze the technical condition of equipment - e.g. an HV power line - and locate problems before damage or serious failure occurs.

### Capabilities

The UV-260 is a high-class, professional, and simultaneously lightweight and intuitive device enabling quick and simple remote diagnostics of a system **without interfering in its operation**. Thanks to the latest generation of imaging system and highly sensitive UV detector, the product enables observation and recording of events in both **UV** and **visible light**. In addition, the image can be saved in the form of photos or video clips.

In the case of complex and extensive energy systems examination, i.e. power lines, a big problem is to pinpoint a potential failure area in an accurate way. That is why Sonel has opted for a comprehensive solution. UV-260 has a **built-in GPS receiver** that registers the location of the taken photo or video.



## Technical specification

## Standard accessories

### UV - optical properties

Image type	Monochrome
Minimum UV sensitivity	$2.2 \times 10^{-18} \text{ W/cm}^2$
Minimum discharge detection	1 pC from the distance of 10 meters
Spectral range	UV 240...280 nm
Field of view H x V	5.5° x 4.0°
Focus	Full auto and manual (UV and visible channels)
Focus distance	2 m...∞
Detector life span	No degradation
Frequency	50 Hz



**Z-23 power supply**  
WAZASZ23



**2x Li-Ion rechargeable battery**  
7.2 V 2.2 Ah  
WAAKU22



**external battery charger**  
WAADALB220



**SD memory card**

### Visible - optical properties

Image type	Full color
UV/visible overlay accuracy	Better than 1 miliradian
Minimum visible light sensitivity	0.1 lx
Zoom factor	25x optical and 12x digital

### Display

Type	5.7" VGA color LCD touchscreen, folding
Video standard	PAL / NTSC
Modes	Combined (UV & visible) / UV only / visible only
Corona shades	White, red, blue

### Processing & communications

Video standard	H.264
Alarms	Audio, LED
Menu	Buttons and LCD touchscreen
Audio	Microphone input for audio notes
GPS	✓



**RCA/RCA video cable**  
WAPRZVIDRCA

### Data storage

Storage media	SD card
Image format	JPG
Video storage	AVI
Storage capacity	8000 images or >4 hours of videos (for 2 GB memory card)
Data download	USB, card reader



**battery charging cable for 12 V car sockets**  
WAPRZLAD12SAM1

### Power system

Power consumption	10 W
Battery type	Li-Ion (2 pcs. included)
Battery run time	2 hours
Charge	External or internal charger
External supply	9-12 V, 10 VA
Power adapter	110...240 V AC, 50/60 Hz / 12 V DC 3.8 A



**camera strap**  
WAPOZSZEUV260

### Other parameters

Operating temperature	-10...+50°C   14°F...122°F
Storage temperature	-25...+60°C   -13°F...140°F
Humidity	95% without condensation
Size	238 x 165 x 91 mm   9.4" x 6.5" x 3.6"
Weight	2.5 kg   5.5 lbs
Power interface	✓
SD card slot	✓
Video output	CVBS
Audio input / output	Microphone / headphones



**hard briefcase**  
WAWALXL11

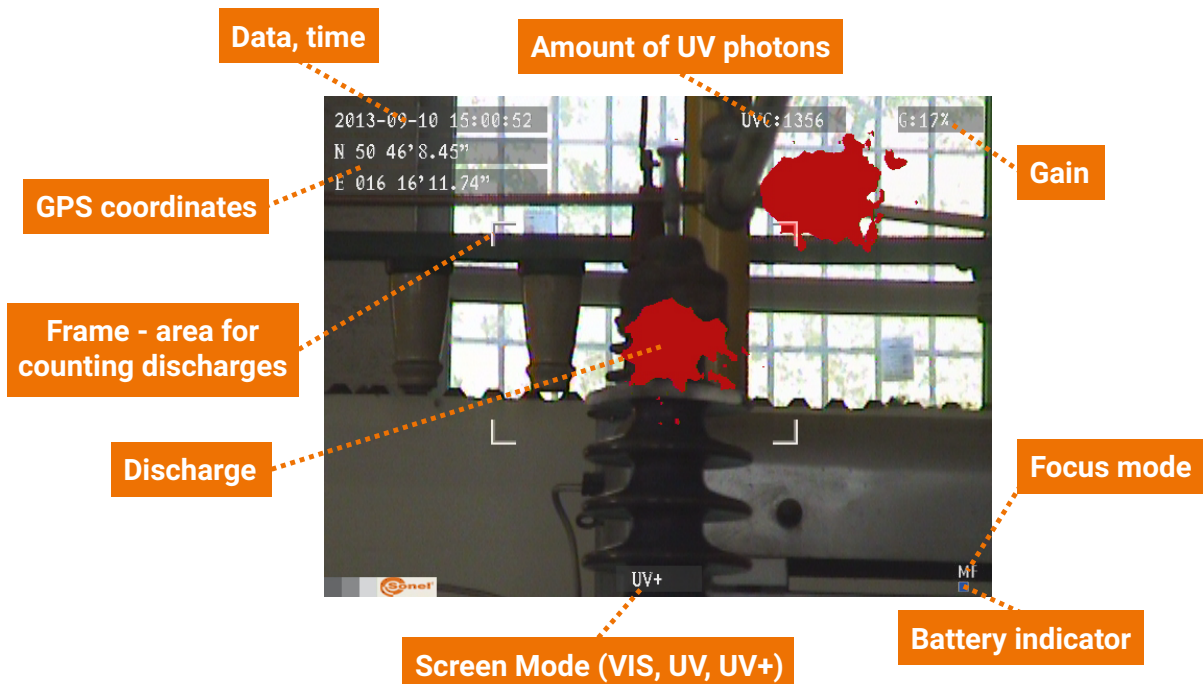


**Moreover:**

- headphone set with microphone - WAPOZSLU2
- PC software
- user manual



Examples of UV discharges. User can opt to show in red, white, or blue rendering against target image



Screen display showing UV discharge information and camera settings